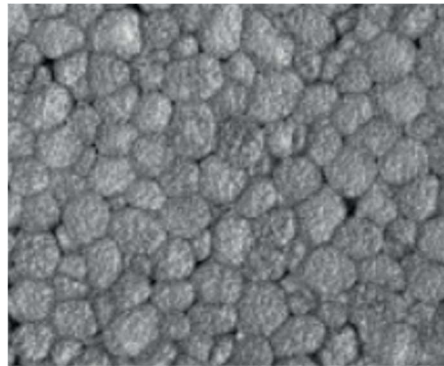




IsoGraphX

F&D Plastics Graphite Solutions

Insulation is paramount importance to reduce the energy consumption of buildings. In summer insulation reduces heat flow from the hot exterior to the cool interior. In winter it reduces the heat lost from the warm interior to the cool exterior. This resistance to heat flow is known as Thermal resistance and is referred to as 'R-Value'. Heat transfer occurs when there is a temperature difference between two areas. Energy is transferred from high temperature to low temperature. Heat preserving and insulation materials are adopted in construction to improve the effective utilization of buildings.



- High graphite loading.
- High purity graphite safe and inert
- No adverse processing effects at customers, maintains uniform cell and bead sizes.
- Excellent dispersion of the Graphite and overall product homogeneity.
- Reduces Thermal Conductivity (λ).
- Reflects radiant heat energy like a mirror increasing resistance to the flow of heat.
- Significantly increasing 'R-Value' enabling thinner panels at same performance.